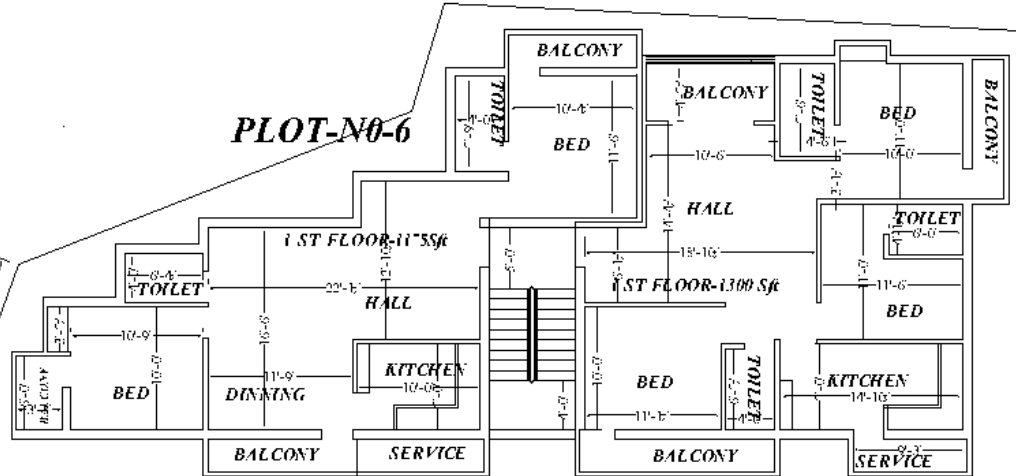
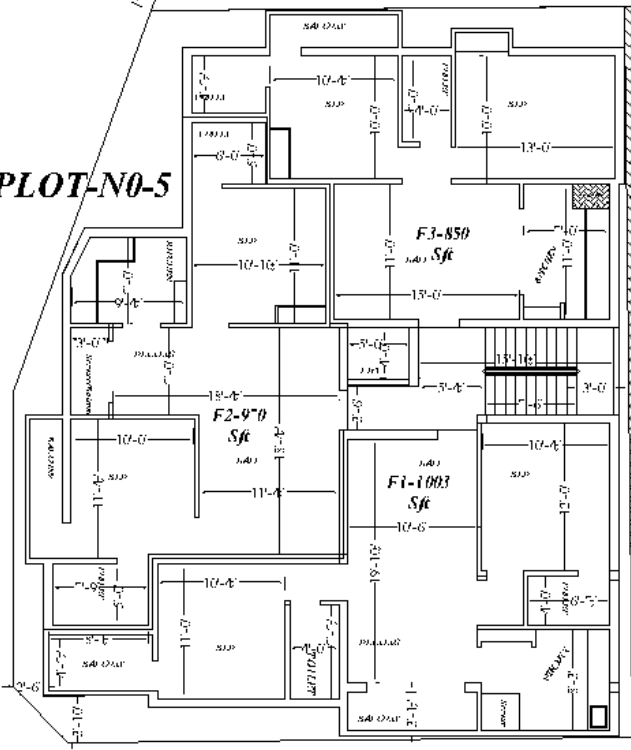


**PLOT-N0-6**



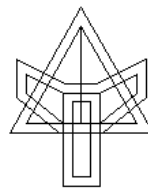
**PLOT-N0-5**



**PLOT-N0-6**

*Rivesed-17/3/20  
-Front block*

**NORTH**



**SOUTH**

*As Per  
Vaasthu-27-8-2018-MNG*

40'-0"

Fact Table			
	Type - 1	Type - 2	
Carpet Area	842	937	Sq.ft
Plinth Area	960	1057	Sq.ft
Common Area	192	211	Sq.ft
Car Park	32	32	Sq.ft
Super Built	1,184	1300	Sq.ft
Un divided share	587.5	650	Sq.ft
UDS Ratio	50%	50%	Sq.ft

# BLOCK - 2

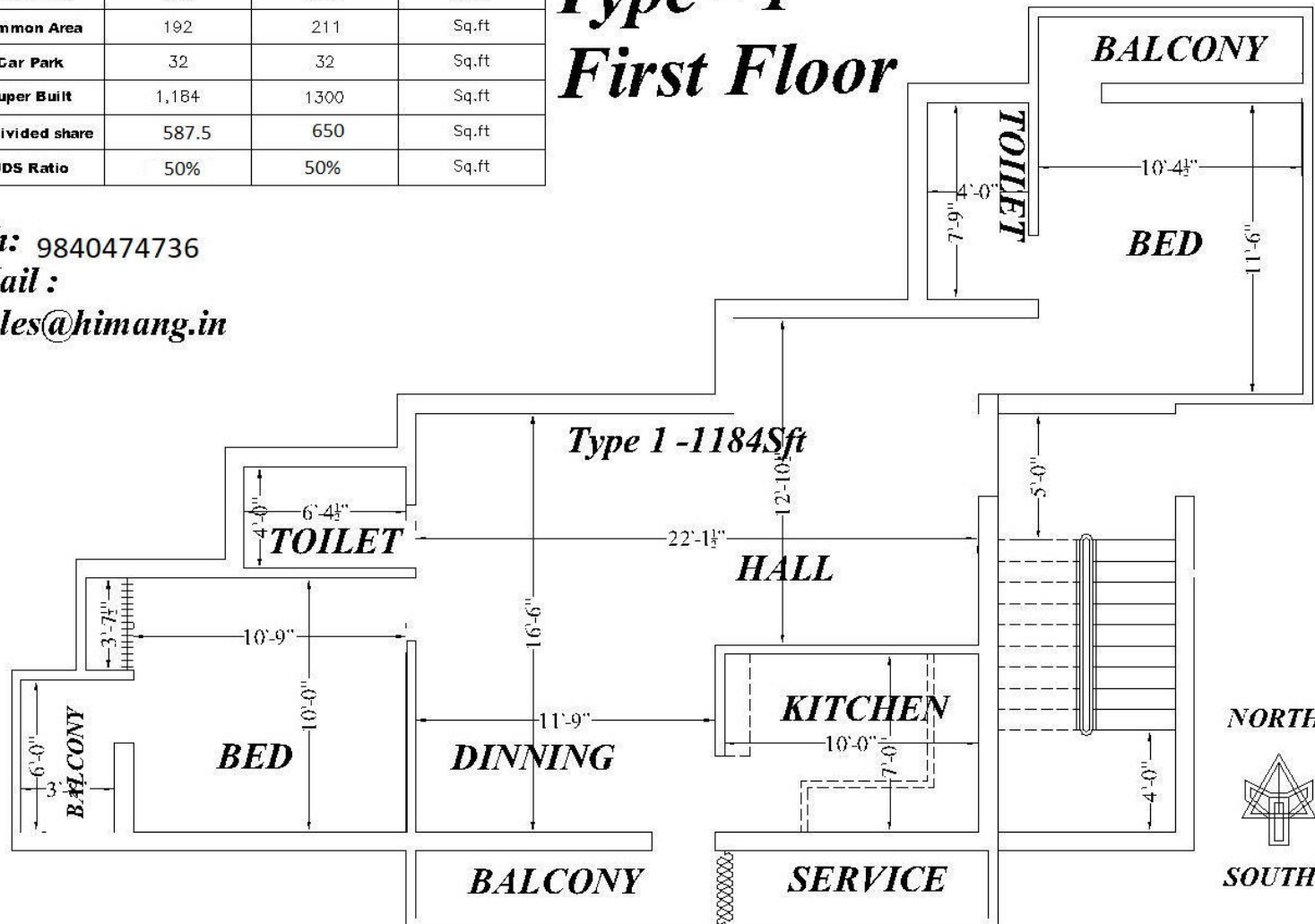
## Type - 1

### First Floor

Ph: 9840474736

Mail :

[sales@himang.in](mailto:sales@himang.in)



*HIMANG's MADHUVANTHI, at Balaji Avenue, Samraj Nagar 8th St,  
Sembakkam*

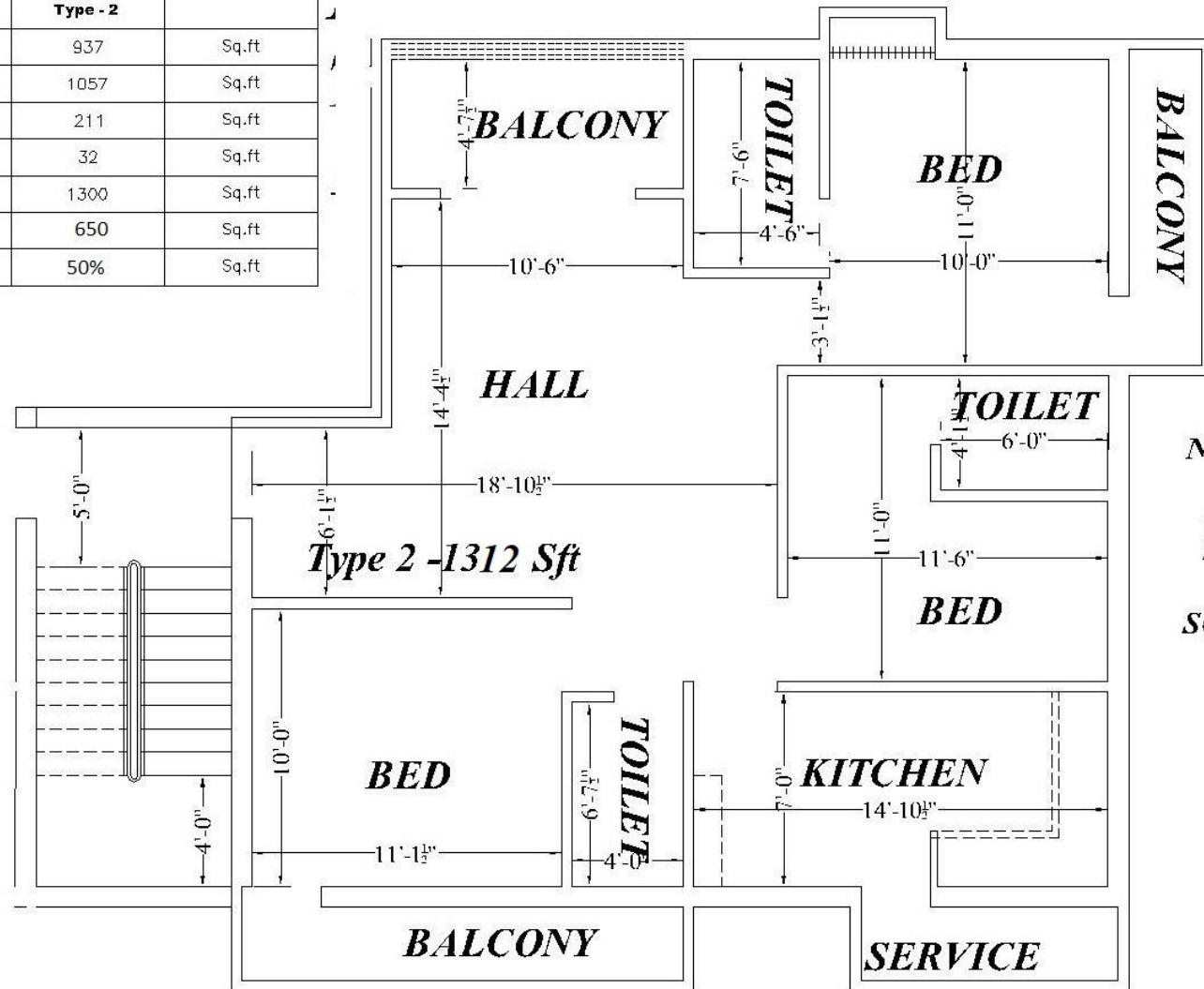
## *Rear Block*

Fact Table			
	Type - 1	Type - 2	
Carpet Area	842	937	Sq.ft
Plinth Area	960	1057	Sq.ft
Common Area	192	211	Sq.ft
Car Park	32	32	Sq.ft
Super Built	1,184	1300	Sq.ft
Un divided share	587.5	650	Sq.ft
UDS Ratio	50%	50%	Sq.ft

Ph: 9840474736

Mail :

sales@himang.in



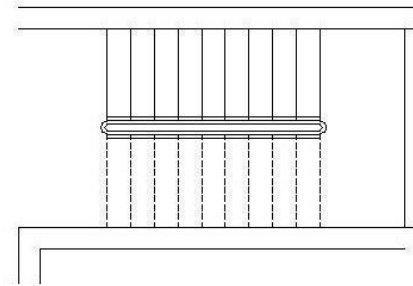
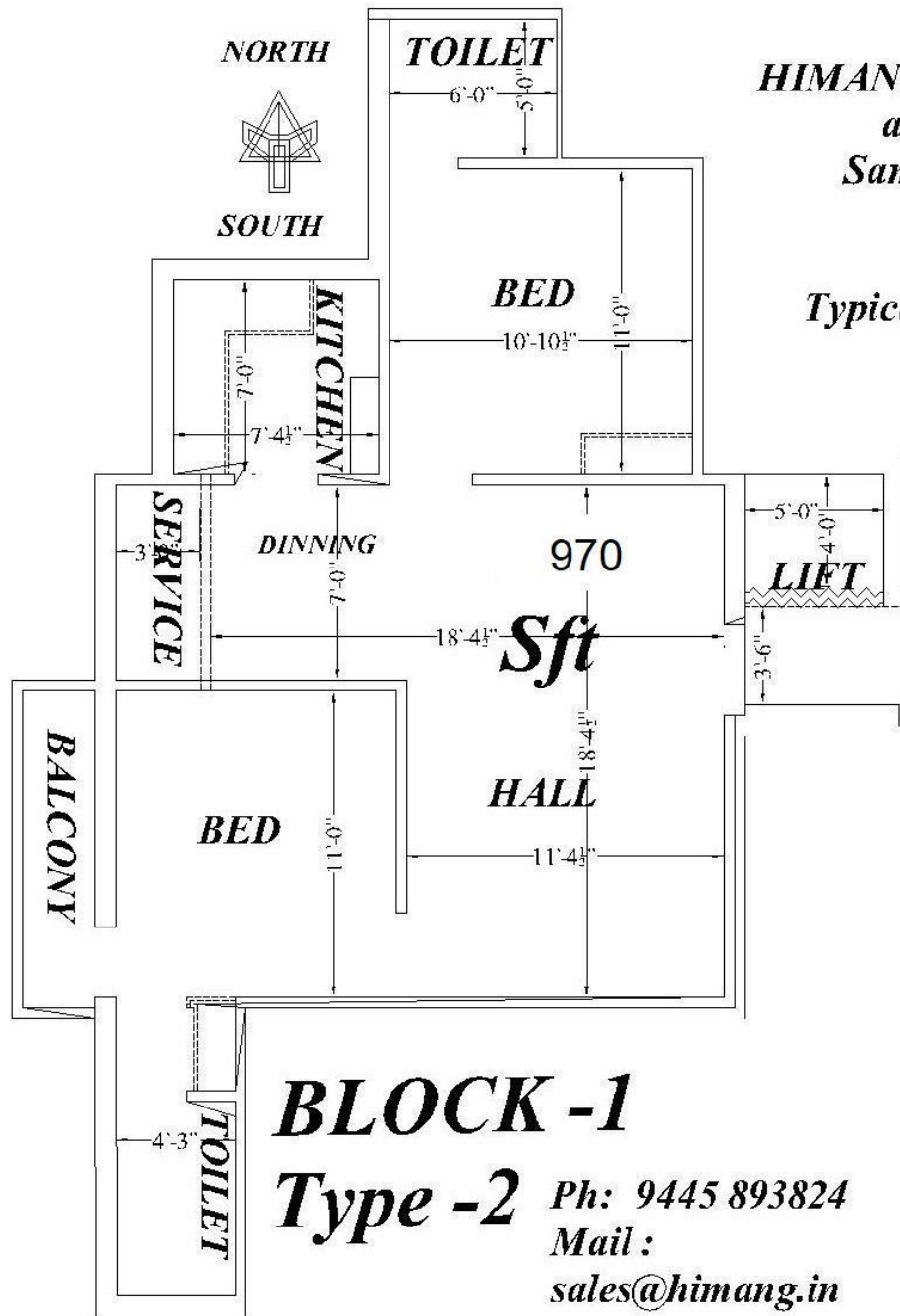
**BLOCK - 2**  
**Type - 1 & 2**  
**First Floor**

NORTH

SOUTH

**HIMANG'S MADHUVANTHI,**  
*at Balaji Avenue,  
 Samraj Nagar 8th St,  
 Sembakkam*

*Typical floor plans for all floors*



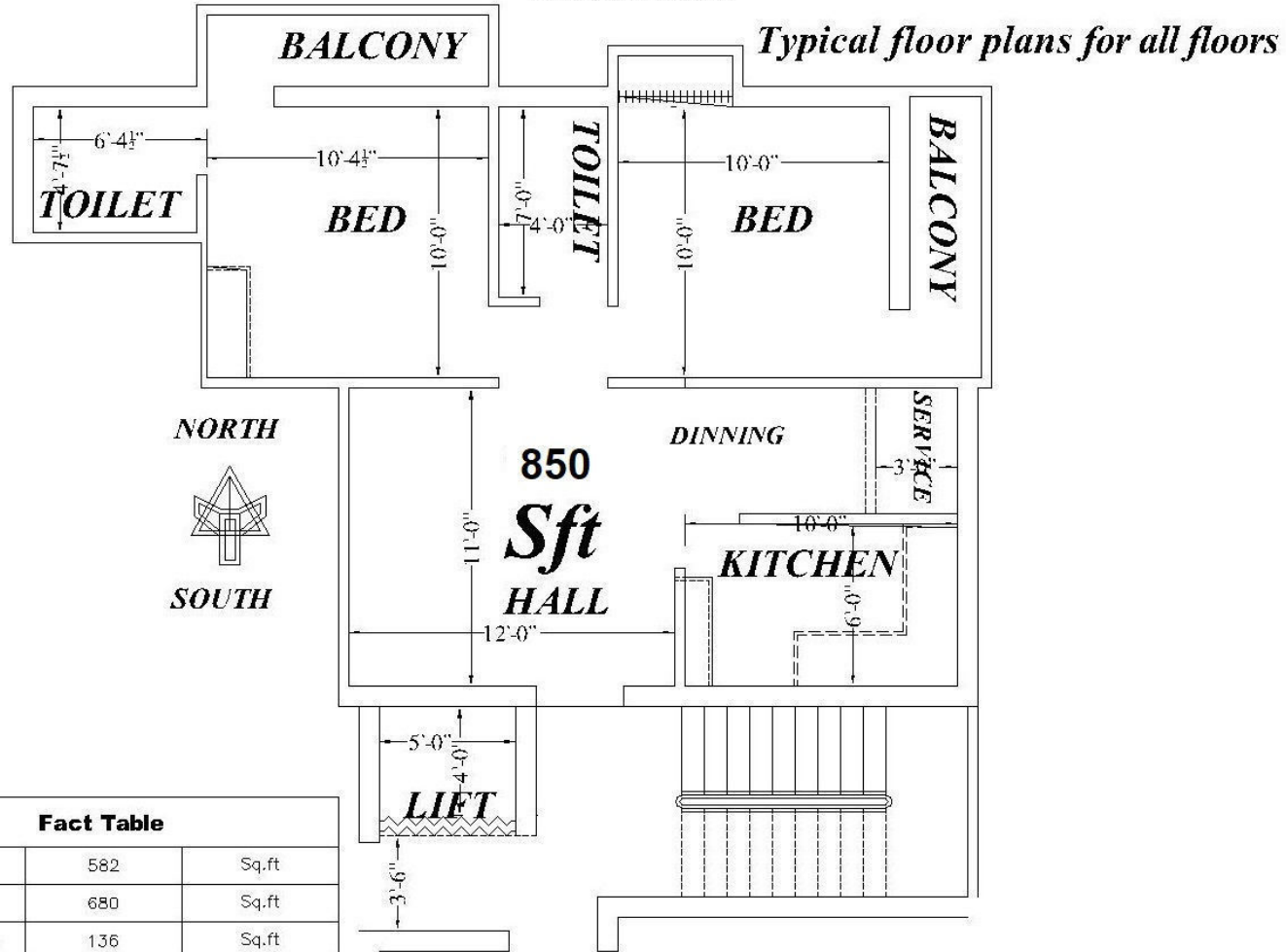
**BLOCK -1**

**Type -2** Ph: 9445 893824  
 Mail : sales@himang.in

**Fact Table**

Carpet Area	676	Sq.ft
Plinth Area	771	Sq.ft
Common Area	154	Sq.ft
Car Park	32	Sq.ft
Super Built	970	Sq.ft
Un divided share	488	Sq.ft
UDS Ratio	51%	Sq.ft

**HIMANG's MADHUVANTHI, at Balaji Avenue, Samraj Nagar 8th St,  
Sembakkam**



**Fact Table**

Carpet Area	582	Sq.ft
Plinth Area	680	Sq.ft
Common Area	136	Sq.ft
Car Park	32	Sq.ft
Super Built	850	Sq.ft
Un divided share	432	Sq.ft
UDS Ratio	51%	Sq.ft

**BLOCK -1**  
**Type - 3**

**Ph: 98404 74736**

**Mail :**

**sales@himang.in**